



GAS POWERED POST DRIVER 5" MULTI BARREL PRO

SKIDRIL the originator of the gas powered post driver introduces the G3XD high power at a great price!

LIGHT WEIGHT AND PORTABLE

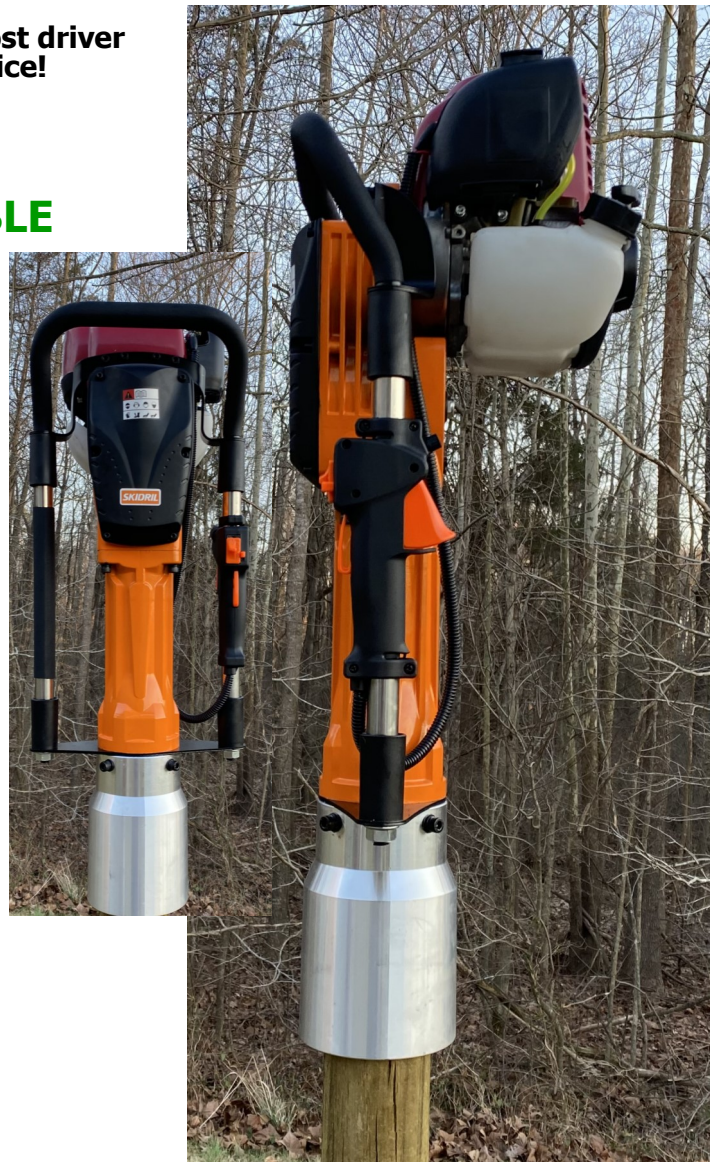
EASY STARTING - EASY

NO HOSES!

POWERFUL



- On-Off simplicity
- Simple 4 cycle OHV engine or powerful 2 cycle
- Easy service replacement motors, for low cost repairs
- 3 engine makes available
- Few moving parts
- Drives from to 5" pipe w/multibarrel
- Available Multi-Collet option removable anvil
- Air cushion dampening for virtually no recoil
- High fuel efficiency 1qt/hr
- Modular design
- Comes with Injection molded case
- Antivibe handles



Dimensions:
29x11.5x13" (configuration may alter dimensions)

Clutch: Centrifugal

Tank Size: 1.0 Qt.

Impact Energy: 49.5 Ft-Lbs

Starter: Recoil

Weight: 49 lbs (depends on configuration)

Hp: 2.0 (2 stroke) 1.4 (4 stroke) or 1.9 hp @ 6000 Rpm

Fuel: Regular gasoline

Max Speed 6000 Rpm

Impact Rate: 1100-1800 Bpm

Engine: 2 Cycle or 4 Cycle OHV

Displacement: 50.0 cc (2 stroke)
37.0 cc (4 stroke)
33.5 cc (4 stroke)

Carburation: Diaphragm

Air Filter: Semi-Wet

**AMERICAN ASSEMBLY,
SERVICE AND SUPPORT!**



SKIDRIL

P.O. Box 8041
Greensboro, NC 27419
Tel: 800-843-3745 Fax: 336-674-6690

